



London District East  
SCITT

*School Centred Initial Teacher Training*



**Ambition  
Institute**

# Teacher Training

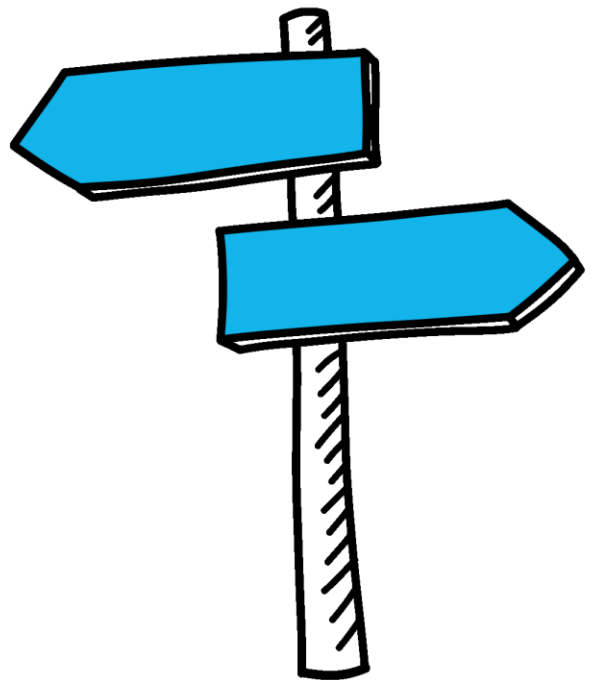
**Delivered by**

London District East and Ambition Institute



# Contents

London District East SCITT .....	2
About your trainers.....	3
The benefits you will receive .....	4
What you will learn .....	4
Where you will learn.....	5
How you will learn .....	6
How we will support you .....	7
The qualifications you will gain .....	8
The funding you could receive.....	8



# About our Teaching Training

## London District East SCITT

Our vision is to train teachers who make a real difference to children's life chances, regardless of their background.

Through our ambitious, rigorous, and evidence-based curriculum, we train excellent teachers to have the skills and knowledge they need to create lasting change by ensuring all pupils succeed.

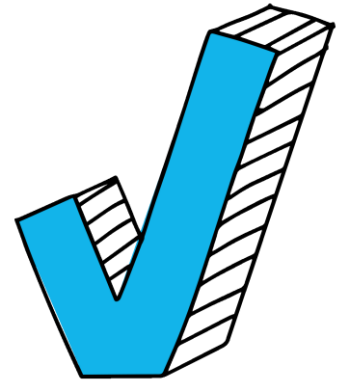
Originally known as The East London Alliance SCITT (ELASCITT), the SCITT was established in 2014 to meet the recruitment and retention needs of teachers in East London. Our first cohort of trainees qualified in 2015 and for the last eight years, we have trained between 20 and 35 trainees each year. The ELASCITT was awarded Grade 1 (Outstanding) in every category in our Ofsted Inspection in 2017.

In 2022, we changed our name to London District East SCITT to sit under the London District East Teaching School Hub, ensuring our ITT provision is part of the Golden Thread within the Teaching School Hub.

This year, we are partnering with Ambition Institute to deliver our Teacher Training programme as a founding partner. Ambition is a national education charity, who has already worked with over 54,000 teachers in over 9,000 schools to deliver high-quality evidence-based professional development.

This partnership combines expert knowledge from within our schools with Ambition's high-quality curriculum. This has been developed by educational experts, many of whom are former teachers with first-hand experience in the classroom.

This curriculum combines the best research around teaching, with practical classroom experience, helping you to become an expert teacher, so you can help shape the lives of the next generation of learners.



## About your trainers



Hi, I'm Rosetta and I will be one of your primary Facilitators and Lead Mentors. I have 23 years of classroom experience as a teacher and senior leader and now work as Director of Teacher Training at London District East, where I will help and support you throughout the year. When I'm not working, you will often find me making music and cycling around London's waterways.



Hi, I'm Laura and I will be one of your Lead Mentors. I trained at the SCITT myself and have 7 years of classroom experience as a teacher and senior leader and now work as Primary SCITT Coordinator at London District East. When I'm not working, you will usually find me on a long, country walk and spending time with family.



Hi, I'm Rosie and I will be one of your secondary Facilitators. I have --been teaching in Newham for over 10 years and work as Deputy Head at the Lead Secondary Partner School of London District East SCITT. I have a huge passion for Teaching and Learning and Curriculum development. When I am not working, you will not find me as I will be travelling!

# The benefits you will receive

With our Teacher Training you will:

- **Make an impact:** Transform your future and the lives of our students with our expert-led, in-school teacher training.
- **Become a qualified teacher:** Achieve qualified teacher status (QTS) and gain an internationally recognised postgraduate certificate in education (PGCE).
- **Get funding to train:** if you are training to teach in secondary, you could be eligible for a tax-free bursary or scholarship up to £30,000 which you would not need to pay back. More information about this is included in [The funding you could receive](#) section of this document.
- **Support:** Get support from a dedicated mentor, an experienced teacher, who will guide you every step of the way. More information about this support is included in the [How we will support you](#) section of this document.

## What you will learn

Our Teacher Training curriculum is divided into five strands:

### Behaviour

How you can create calm, safe and purposeful places of learning where all children and young people can achieve.

### Instruction

How you can support all children and young people to learn in the classroom – from thinking about how you present information, to helping them learn independently in lessons.

### Curriculum

How you can design lessons and curricula that help children and young people to learn new and more complex ideas over time.

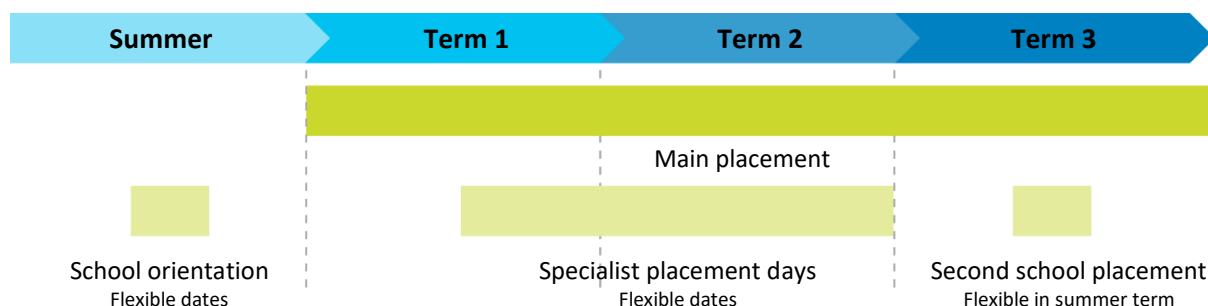
### Assessment

How you can better understand the impact your teaching is having and how to respond when your pupils struggle.

### Professionalism

Looking at what it is to be a teacher and how to prepare for your professional career.

# Where you will learn



## Main placement

You'll do most of your training in one of our schools. This will be known as your main placement school and will also be the same school your mentor is based in. We hope that this school will feel like *your* school. You'll feel like you belong, and that means feeling and being like part of our team.

We will work hard to find a school which is local to you.

## Second placement

As well as your main placement school, you will do a short second placement in a contrasting school, which will have different characteristics to your main placement school.

## Specialist placement days

We'll also arrange a number of specialist placement days for you across the year. They might be:

- A nursery or early years setting.
- A pupil referral unit for children who are unable to attend a mainstream school.
- A special school for children who have learning difficulties.
- A forest school.

Together, these placements will expose you to, and allow you to, gain experience across a diverse range of settings.

## How you will learn

Each of our modules starts by introducing you to the ideas and theories underpinning the practice. You will then learn step-by-step, how to apply these ideas in your own classroom. Our Teacher Training will use the following methods to help you achieve this.



### **Independent study**

Each week you will do independent study where you will be exposed to academic theory. This will boost your knowledge within a specific area. For example, you might spend some time reading about the science of learning. Lots of your study resources will be hosted on our online learning platform, which will break content down through videos, quizzes, and examples.



### **Weekly expert-led clinics**

You will also attend weekly clinics with other trainee teachers. These are small-group sessions which give you the opportunity to take a complex area of teaching and unpick it with the help of education experts.



### **Deliberate practice**

Many new teachers struggle to bridge the 'knowing doing gap', meaning they can sometimes struggle to translate new knowledge they have learned into action in the classroom. That's why deliberate practice is such a big part of our programme. Instead of trying out a new strategy for the first time live in a classroom, you will get to practise in a safe space first. This might mean standing up and rehearsing an explanation in front of your mentor.

Each time you practice, you will get bite-sized pieces of feedback from an expert. You will use this feedback to make small changes and can have another go straight away. This will allow you to develop good habits so that you feel confident when it comes to teaching in front of a live class.



### **Chunked learning**

Our learning introduces new and difficult ideas slowly and in broken down chunks. Our online learning platform also gives you the ability to revisit topics, allowing you to refresh your understanding if needed.

## Subject specialism



If you're teaching a secondary subject, at least 50% of your weekly modules will focus on your chosen secondary subject, providing an excellent opportunity for you to develop your expertise in teaching this subject.

If you're teaching in a primary school, your weekly modules will focus on different subjects, helping you to develop your subject-specific expertise across the full breadth of the primary curriculum.

## How we will support you



### In-school mentor

When you begin your training, you will be assigned a designated mentor. They will be an experienced teacher in your main placement school. They'll be your go-to person and support your journey on the road to becoming a teacher. You will have scheduled time with your mentor every week, but you will probably talk to them every day about how you're getting on.



### 90 minutes a week of protected time with your mentor

You'll meet your mentor for at least 90 minutes each week. This is protected time and is designed to help support you. In these sessions you'll have structured coaching conversations with your mentor. They'll help to you to prepare for the lessons you'll be teaching later that week.



### Workload and wellbeing support

We understand how important it is to support you with your wellbeing whilst you're training. That's why 30 minutes of mentoring time each week will be dedicated to discussing workload and well-being.



## The qualifications you will gain

You will complete a number of PGCE assignments across the year which will be marked by university tutors.

At the end of the course, you'll receive Qualified Teacher Status (QTS) and a Postgraduate Certificate of Education (PGCE). QTS is a nationally recognised teaching qualification which will allow you to teach in many schools in England. The PGCE is an internationally recognised qualification.

Your PGCE will also give you credits if you want to complete a masters in the field of education later in your career. All our trainees who complete their PGCE will be awarded 60 credits towards a masters degree.

## The funding you could receive

### Primary school

#### Tuition fees

Tuition fees for our Teacher Training programme are £9,250 for full-time study and £12,500 for part-time study (three days per week, spread across two years). You can apply for government funding (Student Loans Company) to cover the costs of your tuition fees.

#### Maintenance loan for 2024 to 2025

You may also decide to apply for a maintenance loan of up to £13,022 to help you with your living costs. You can do this even if you already have a student loan, regardless of whether you get a teaching bursary or scholarship. You will then only have to make loan repayments once you are earning.

To find out more about tuition fees and maintenance loans visit

[www.getintoteaching.education.gov.uk](http://www.getintoteaching.education.gov.uk)

### Secondary school

#### Bursaries and scholarships

You may be eligible for a bursary or scholarship from the Department for Education which you would not need to pay back. This depends on which subject you choose.

## Eligibility

You must be eligible for student finance to receive a bursary or scholarship. You can check your eligibility by visiting: [www.gov.uk/student-finance/who-qualifies](http://www.gov.uk/student-finance/who-qualifies). The only exception to this is if you are training to teach physics or languages. Additionally, you cannot receive both a teaching bursary and a scholarship. You also can't receive a bursary or scholarship if you're on a salaried teacher training course.

## Bursaries for 2024 to 2025

- £28,000 in chemistry, computing, mathematics and physics.
- £25,000 in biology, geography and languages.
- £10,000 in English and art and design,
- Applicants may be eligible for a bursary if they have First, 2:1, 2:2, PhD, or master's degree.

## Scholarships for 2024 to 2025

- £30,000 in chemistry, computing, mathematics and physics.
- £27,000 in French and Spanish.

Scholarships are usually available to applicants with a First, 2:1, master's, or PhD degree, though, in exceptional circumstances, they may be awarded to a graduate with a 2:2 and significant relevant experience.

All bursaries and scholarships are tax-free. To find out more about these, visit: [www.getintoteaching.education.gov.uk](http://www.getintoteaching.education.gov.uk)

## Tuition fees

Tuition fees for our Teacher Training programme are £9,250 for full-time study and £12,500 for part-time study. You can apply for government funding to cover the costs of your tuition fees.

## Maintenance loan for 2024 to 2025

You may also decide to apply for a maintenance loan of up to £13,022 to help you with your living costs. You can do this even if you already have a student loan, regardless of whether you get a teaching bursary or scholarship. You will then only have to make loan repayments once you are earning.

To find out more about tuition fees and maintenance loans visit: [www.getintoteaching.education.gov.uk](http://www.getintoteaching.education.gov.uk)